

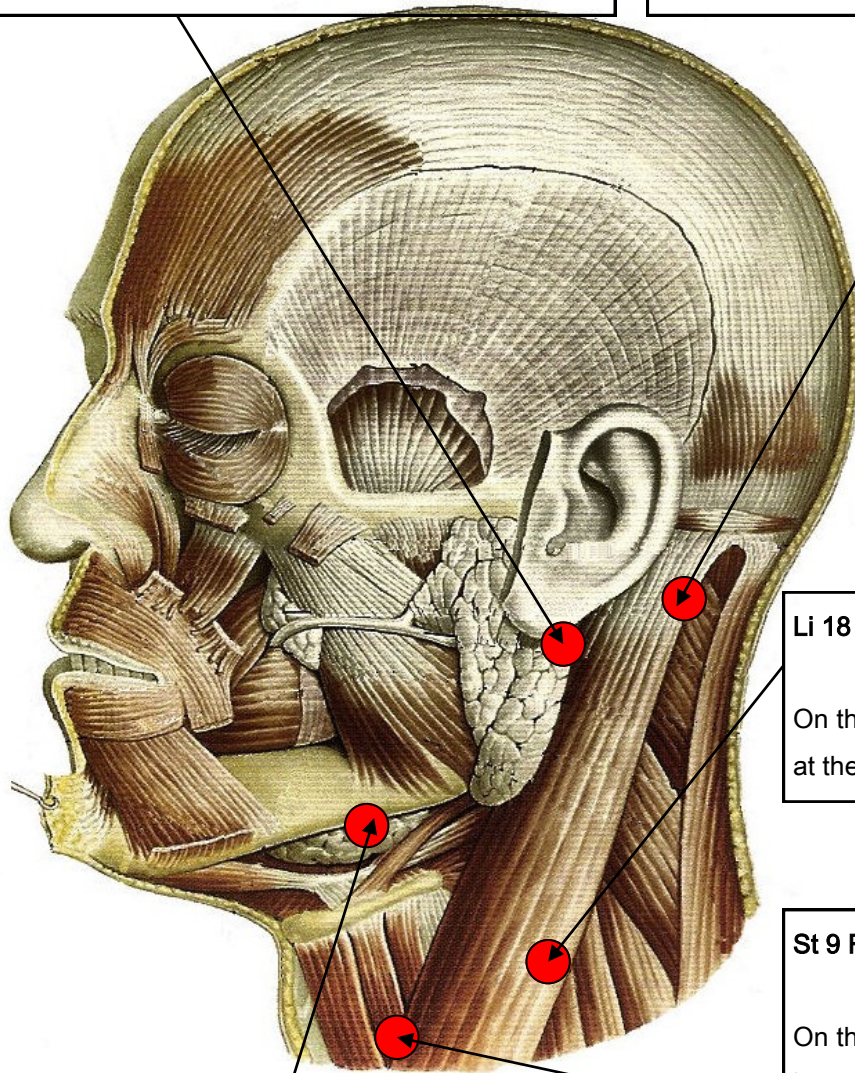
STANDARD POINTS OF ACUPUNCTURE FOR KYUSHO APPLICATIONS

Tw 17 Yiféng

Posterior to the ear lobe. In the depression between the mastoid process and mandibular angle

Gb 20 Féngchi

On the nape, below the occipital bone, in the depression between the upper ends of the sternocleidomastoid and trapezius muscles.



Li 18 Fútú

On the neck and on the anterior midline, at the centre of the suprasternal fossa

St 9 Rényíng

On the neck beside the laryngeal protuberance and on the border of the sternocleidomastoid muscle where the pulsation of the carotid artery is palpable.

St 5 Dáyíng

Anterior to the mandibular angle, on the anterior border of the masseter muscle, where the pulsation of the facial artery is palpable.

Gall Bladder Points:

GB 20S Important point behind mastoid process on outer section of trapezius muscle and end of sternocleidomastoid. Associated with smaller occipital nerve. Hammer fist, ridge hand, palm heel etc. Also a revival point

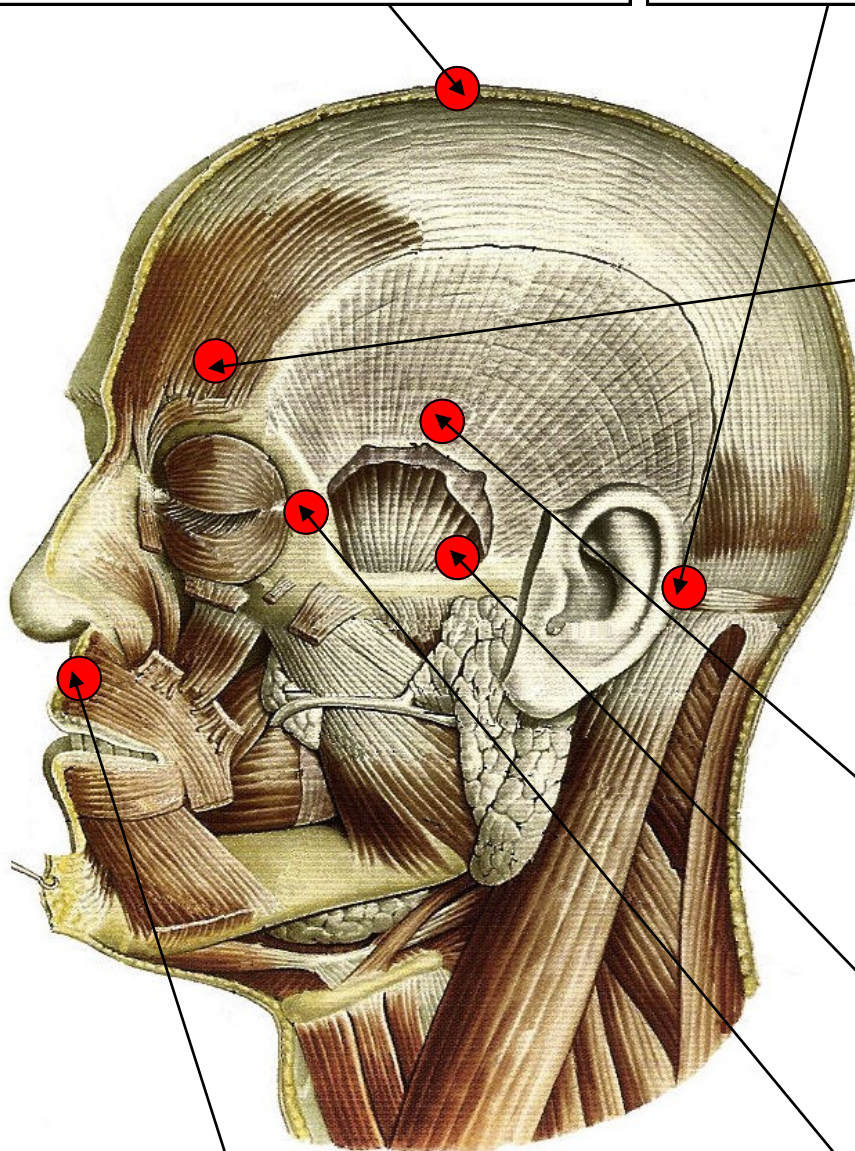
STANDARD POINTS OF ACUPUNCTURE FOR KYUSHO APPLICATIONS

Gv 21 Qianding

Top of the head. Vulnerable to elbow strikes. A powerful blow is potentially fatal.

Gb 20 Féngchi

On the nape, below the occipital bone, in the depression between the upper ends of the sternocleidomastoid and trapezius muscles.



Gb 14 Yangbal

Approx 1 inch above the supra orbital notch midpoint of the eyebrow. Strike either upwards or downwards. Attack with palm heel.

Gb 4 Hanyan

On the temple. Potentially fatal point. Also useful as pain control, release point. Attack with elbow, back knuckle fist or one knuckle fist.

Gb 3 Shangguan

On the upper boarder of the zygomatic arch.

Gb 1 Tongziliao

In the depression lateral to the eye socket.

Gv 26 Renzhong

Centre of the philtrum. Vulnerable to preasure, associated with the infra orbicular branch of the trigeminus nerve and the branch of the cheek muscle facial nerve. Attack with knuckles, palm heel etc.

Gall Bladder Points:

GB 20S Important point behind mastoid process on outer section of trapezius muscle and end of sternocleidomastoid. Associated with smaller occipital nerve. Hammer fist, ridge hand, palm heel etc. Also a revival point

STANDARD POINTS OF ACUPUNCTURE FOR KYUSHO APPLICATIONS

Gb 20 Féngchi

On the nape, below the occipital bone, in the depression between the upper ends of the sternocleidomastoid and trapezius muscles.

The Triple Warmer Points:

Tw 17 Associated with the facial nerves and great auricular point where TW meridian joins GB meridian. A very dangerous point. Known as a potentially deadly point.

Tw 17 Yiféng

Posterior to the ear lobe. In the depression between the mastoid process and mandibular angle

Li 18 Fútú

On the neck and on the anterior midline, at the centre of the suprasternal fossa

St 9 Rényíng

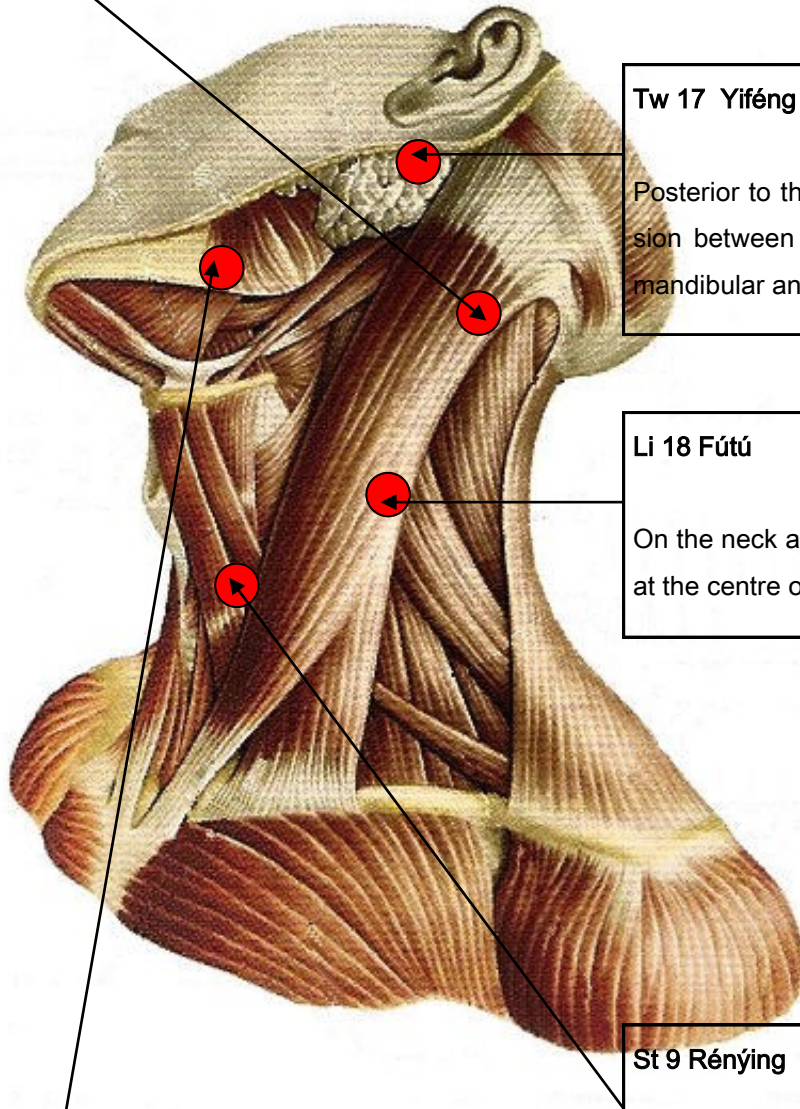
On the neck beside the laryngeal protuberance and on the border of the sternocleidomastoid muscle where the pulsation of the carotid artery is palpable.

St 5 Dáyíng

Anterior to the mandibular angle, on the anterior border of the masseter muscle, where the pulsation of the facial artery is palpable.

The Stomach Points:

S 5 Associated with 7th cranial nerve. Should be struck up and inwards.



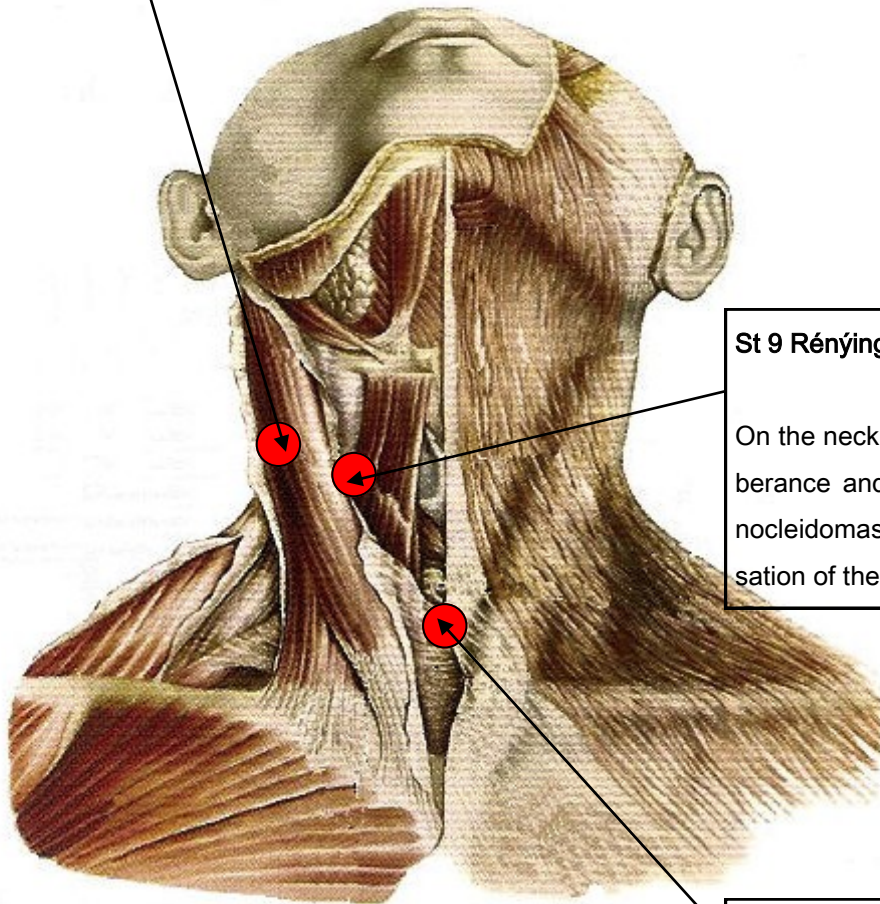
STANDARD POINTS OF ACUPUNCTURE FOR KYUSHO APPLICATIONS

Li 18 Fútú

On the neck and on the anterior midline, at the centre of the suprasternal fossa

The Large Intestine Points:

LI 18 Situated near the brachial plexus. A heavy handed blow will cause loss of consciousness.



St 9 Rényíng

On the neck beside the laryngeal protuberance and on the border of the sternocleidomastoid muscle where the pulsation of the carotid artery is palpable.

Cv 22 Tiántú

On the neck and on the anterior midline, at the centre of the suprasternal fossa

The Stomach Points:

S 9 Very dangerous point. Total destruction of both vegas nerves is incompatible with life. It serves virtually every organ in the thorax and abdomen. Stimulation sends messages via the vegas nerves to the heart decreasing rate and forcing a drop in arterial blood pressure.

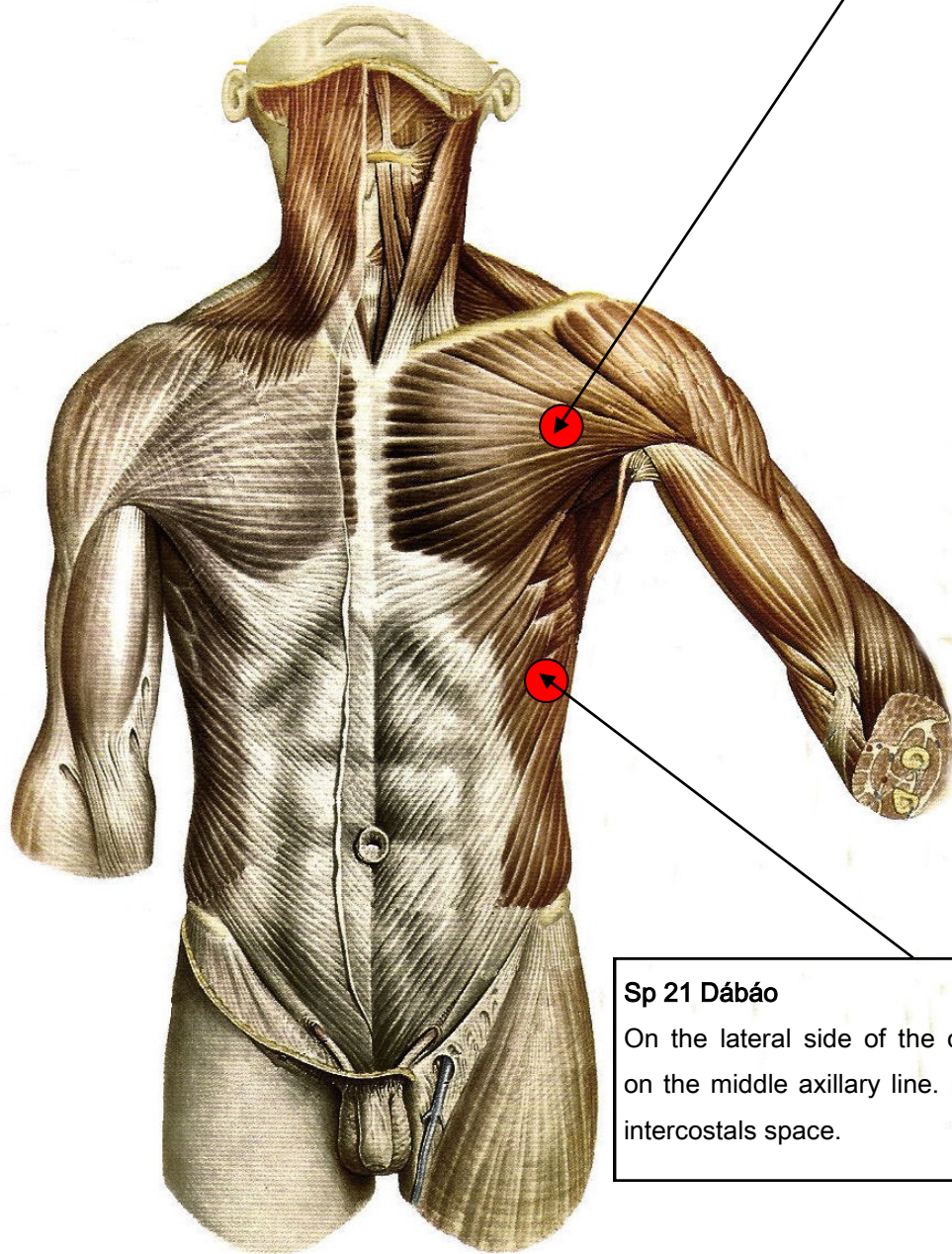
The Conception Vessel Points:

CV 22 Can cause death. Use fingertips, flat knuckle fist, knife hand.

STANDARD POINTS OF ACUPUNCTURE FOR KYUSHO APPLICATIONS

Sp 20 Zhóuróng

On the lateral side of the chest and in the 2nd intercostals space.



Sp 21 Dábáo

On the lateral side of the chest and on the middle axillary line. In the 6th intercostals space.

Spleen Points:

Sp 20 Often associated with strike to Li 14 point, to arrest the heart and lung activity with potentially fatal result

STANDARD POINTS OF ACUPUNCTURE FOR KYUSHO APPLICATIONS

Lu 2 Yunmen

Level with the lower border of the sterna extremity of the clavicle, two finger breadths lateral to the mid point of the clavicle, in the infraclavicular fossa.

Lu 1 Zhongfu

Directly below Yunmen (Lu 2)

St 14 Kúfáng

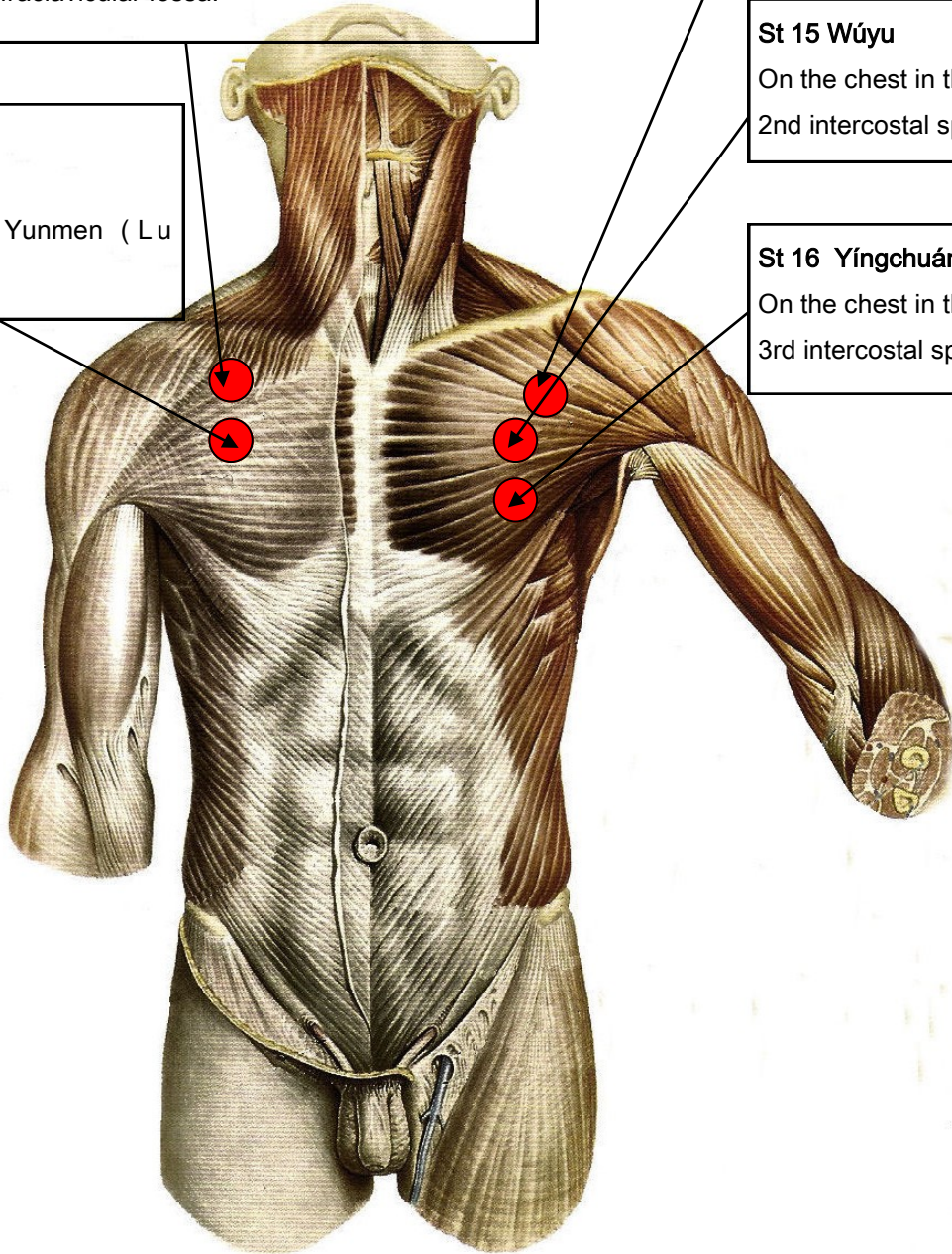
On the chest in the 1st intercostal space.

St 15 Wúyu

On the chest in the 2nd intercostal space.

St 16 Yíngchuáng

On the chest in the 3rd intercostal space.



Stomach Points:

ST15 and 16 Both affect the heart. Palm heel especially downwards

Lung Points:

LU 1 and 2 Used as to set up further points and to weaken the arm.

STANDARD POINTS OF ACUPUNCTURE FOR KYUSHO APPLICATIONS

Cv 24 Chéngjiáng

On the face, in the depression at the midpoint of the mentolabial sulcus.

Cv 22 Tiántú

In the notch at the top of the sternum and on the anterior midline, at the centre of the suprasternal fossa.

Cv 23 Liánquán

Just under the chin, on the neck and on the anterior midline, above the laryngeal protuberance, in the depression above the upper boarder of the hyoid bone.

Cv 17 Dánzhōng

On the chest and on the midline, on the level of the 3rd intercostal space.

Cv 14 Júqué

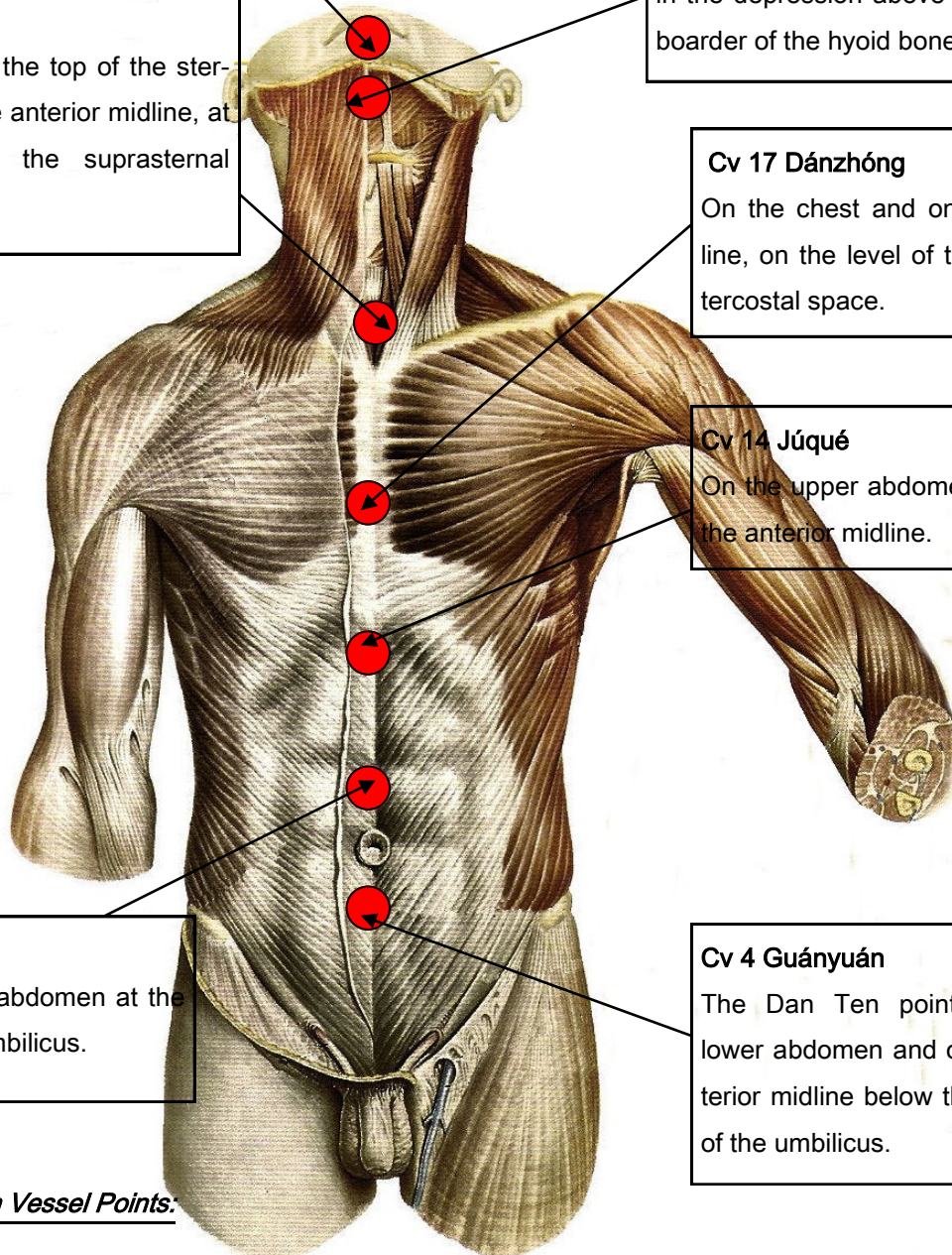
On the upper abdomen and on the anterior midline.

Cv 8 Shénqué

On the middle abdomen at the centre of the umbilicus.

Cv 4 Guányuán

The Dan Ten point, on the lower abdomen and on the anterior midline below the centre of the umbilicus.



The Conception Vessel Points:

CV22

Can cause death. Can use fingertips, flat knuckle fist, knife hand.

V17 Strike downwards, upwards or inwards. A hard blow can arrest the heart, lighter drains energy.

CV14 Affects the heart and can cause arrest. Very dangerous in combination, double strike with CV 4 using palm heels. Upward strike dangerously raises blood pressure. $\frac{3}{4}$ turn fist, elbow etc.

CV 4 Important for combinations. Upwards blow dangerously increases blood pressure. Downwards causes energy drain. Associated with the 12th intercostal nerve.

STANDARD POINTS OF ACUPUNCTURE FOR KYUSHO APPLICATIONS

Gall Bladder Points:

*GB 24 A deadly point when in conjunction with
LI 14 Double palm heel etc.*

Gb 23 Zhéjin

On the lateral side of the chest on the level of the nipple, and in the 4th intercostal space.

Gb 22 Yuányé

On the lateral side of the chest, on the midaxillary line when the arm is raised, in the 4th intercostal space.

Li 14 Qimén

On the chest, directly below the nipple, in the 6th intercostal space.

Gb 27 Wúshú

On the lateral side of the abdomen, anterior to the anterosuperior iliac spine.

Gb 24 Riyué

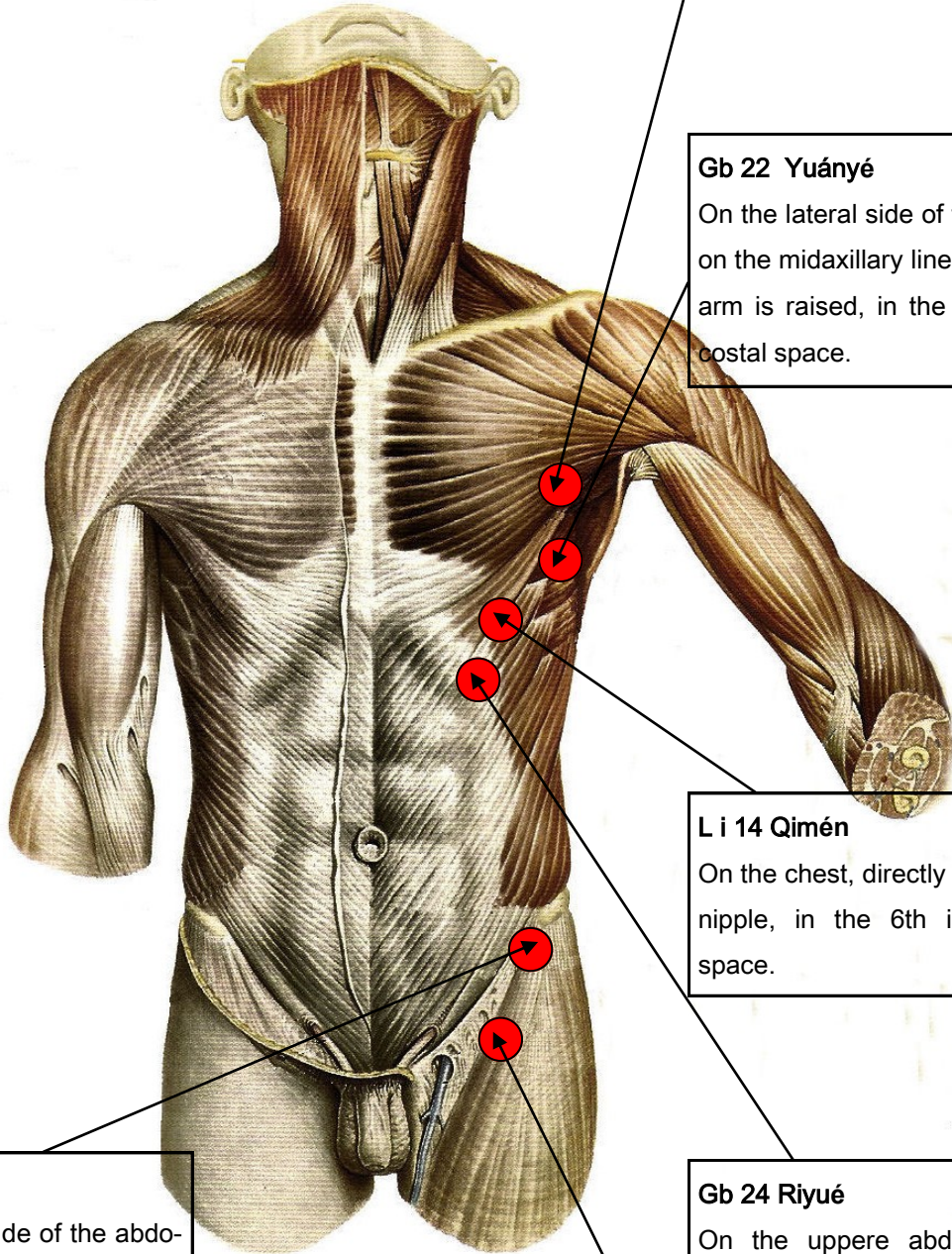
On the upper abdomen directly below the nipple in the 7th intercostal space.

Liver Points:

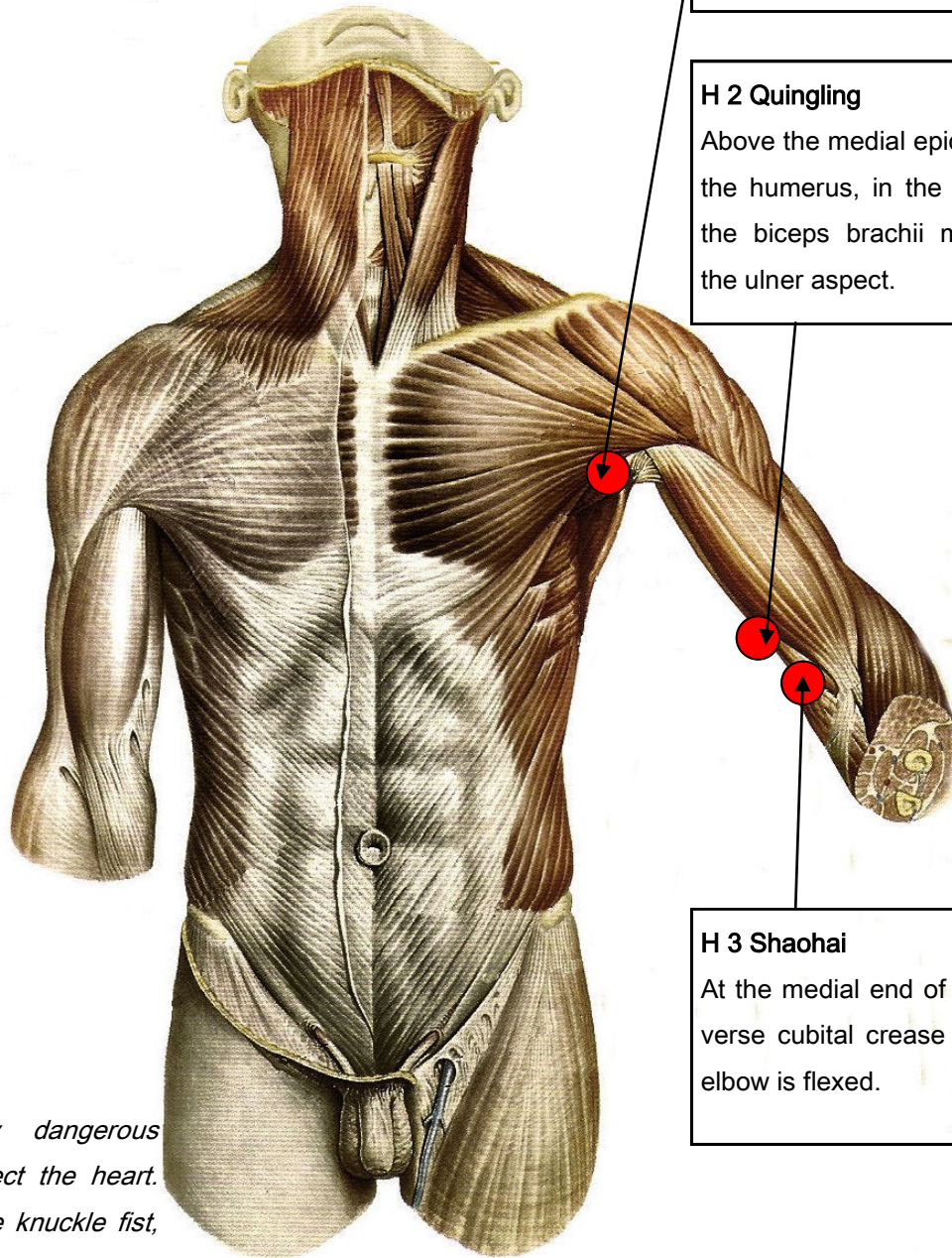
LI 14 Struck with the palm heel in conjunction with S 9 is potentially fatal.

Gb 28 Wéidáo

On the lateral side of the abdomen



STANDARD POINTS OF ACUPUNCTURE FOR KYUSHO APPLICATIONS



H 1 Jiquan

In the centre of the armpit, on the medial side of the axillary artery.

H 2 Quingling

Above the medial epicondyle of the humerus, in the groove of the biceps brachii muscle on the ulnar aspect.

H 3 Shaohai

At the medial end of the transverse cubital crease when the elbow is flexed.

Heart Points:

H1 Extremely dangerous point. Can effect the heart. Attack with one knuckle fist, elbow, toes etc.

H2 Associated with the ulna nerve. Attack with thumb, fingertips etc.

H3 Can disturb the heart rate. Attack with thumb, knuckles etc.

STANDARD POINTS OF ACUPUNCTURE FOR KYUSHO APPLICATIONS

Gb 3 Shangguan

On the upper boarder of the zygomatic arch.

Li 17 Tianding

At the bottom edge of the sternocleidomastoid muscle.

Gb 21 Jianjing

Sholder point on the top of the trapezius muscle. Important revival stimulation point.

Lv 14 Qimen

In the intercostals space 2 ribs below the nipples. Potentially fatal if struck in combination with S 9.

Lv 13 Zhangmen

Below end of 11th rib. Meeting point of Gall Bladder and Liver Meridians. Attack ninwards diagonally upwards. Fist, palm heel, elbow, one knuckle fist etc. Aswsociated with 10th intercostals nerve.

Gb 20 Féngchi

On the nape, below the occipital bone, in the depression between the upper ends of the sternocleidomastoid and trapezius muscles.

Li18 Fútú

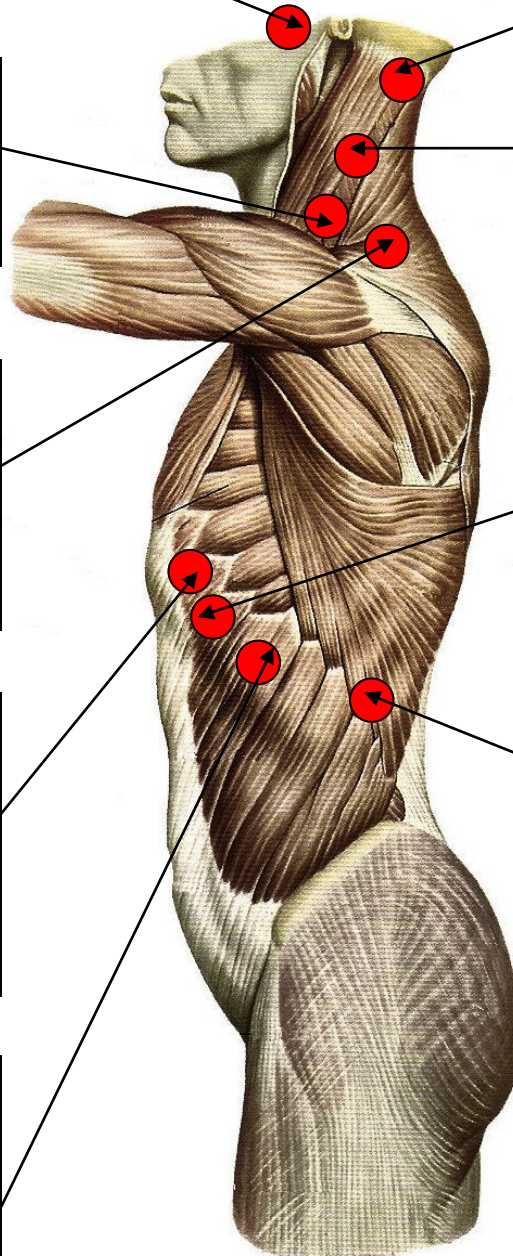
On the neck and on the anterior midline, at the centre of the suprasternal fossa

Gb 24 Riyué

On the uppere abdomen directly below the nipple in the 7th intercostal space.

Gb 25Jinggmen

Anterior tip of the twelfth rib. Attack as GB 24 but with straight in direction.



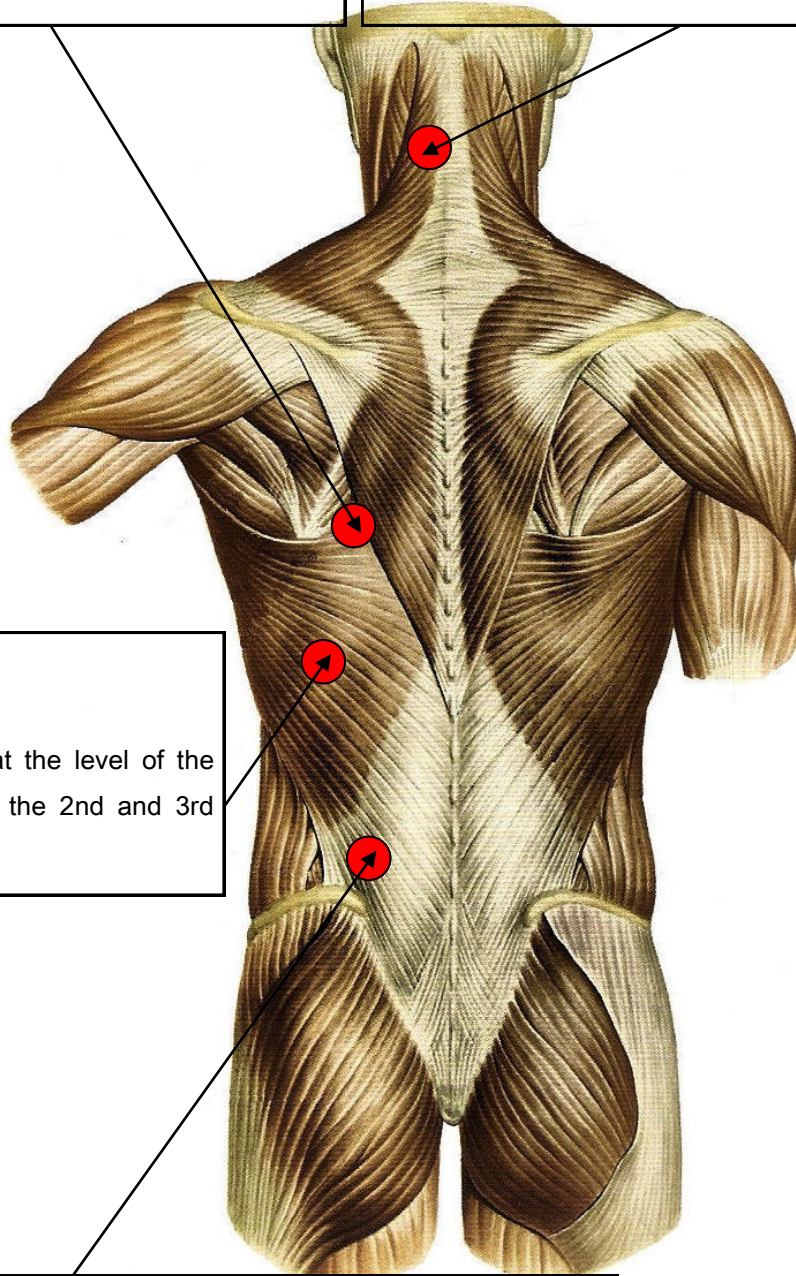
STANDARD POINTS OF ACUPUNCTURE FOR KYUSHO APPLICATIONS

SI 11 Tiánzǒng

On the scapula, in the depression of the center of the fossa and the level of the 4th thoracic vertebra.

BI 10 Tiánzhú

On the nape, in the depression of the lateral border of the trapezius muscle, lateral to the midpoint of the posterior hairline.



BI 47 Húnmen

4½ From the spine at the level of the depression between the 2nd and 3rd lumbar vertebrae.

BI 24 Qiháishú

Approximately 1½ inches from the spine between 15th and 16th vertebrae associated with lateral cutaneous branch of the 2nd lumbar nerve and deeper with lateral cutaneous branch of the lateral cutaneous branch of the 1st lumbar nerve.

STANDARD POINTS OF ACUPUNCTURE FOR KYUSHO APPLICATIONS

Lung Points:

LU 5 Inside of forearm approx, 1 inch from the elbow crease. A very effective strike point, causes legs to buckle. Forearm, hammer fist, fingertips etc.

LU 8 Grab point

Lu 5 Chìzé

In the cubital crease, in the depression of the radial side of the tendon of the biceps muscle of the arm.

Pc 4 Ximén

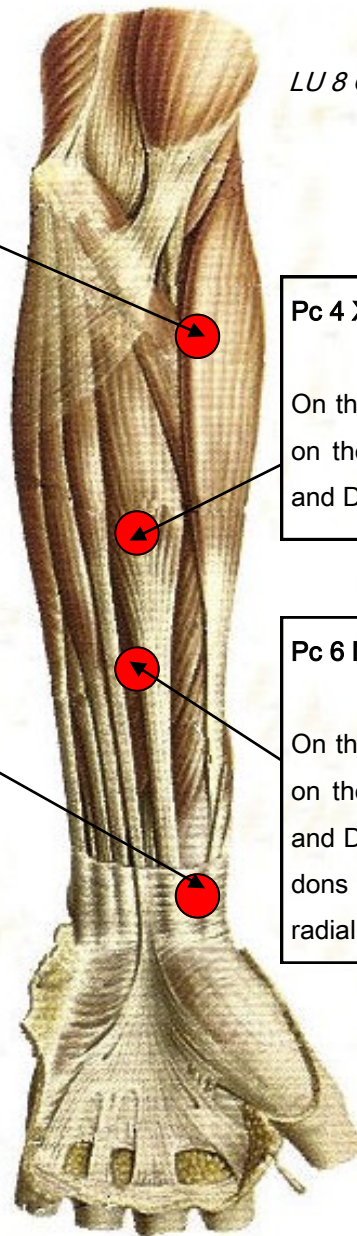
On the palmar side of the forearm and on the line connecting Quze (PC3) and Daling (PC7).

Lu 8 Jingqú

On the radial sides of the palmar surface of the forearm, in the depression between the styloid process of the radius and radial artery.

Pc 6 Néiguán

On the palmar side of the forearm and on the line connecting Quze (PC3) and Daling (PC7), between the tendons of the long palmar muscle and radial flexor of the wrist.



Pericardium Points:

PC 4 Stimulates meridian when struck.

PC 6 Strikes to this accessible point affects the heart. Important set up point with S9 for example.

STANDARD POINTS OF ACUPUNCTURE FOR KYUSHO APPLICATIONS

Lu 3 Tiánfú

On the medial side of the upper arm and the radial border of the biceps muscle of the arm.

Tw 12 Xiaoluo

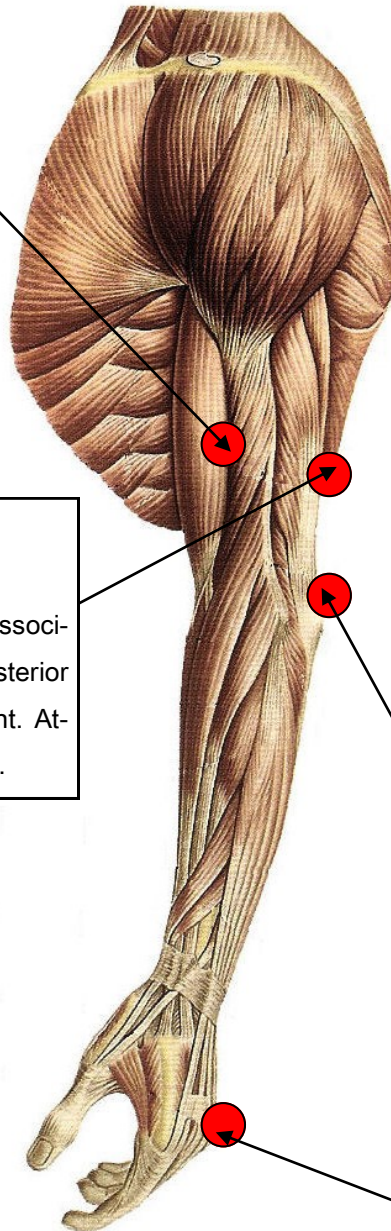
In the hollow of the triceps muscle. Associated with the radial nerve and the posterior brachial cutaneous nerve. A strike point. Attack knife hand, forearm, hammer fist etc.

Tw 11 Qinglengyuan

Above the elbow joint. Associated with the radial nerve and the posterior brachial nerve. A pressure rather than a strike point. Rub with knuckles, forearm etc.

Tw 3 Zhongzhu

Between the 3rd and 4th metacarpal bones on the back of the hand. Associated with the ulna nerve. Attack with hammer fist, knuckles etc.



STANDARD POINTS OF ACUPUNCTURE FOR KYUSHO APPLICATIONS

St 34 Liangqui

About 4 inches above the knee, between the vastus lateralis and the rectus femoris. associated with the lateral femoral cutaneous nerve. Attack with foot, knee etc.,

Gb 34 Yanglingquan

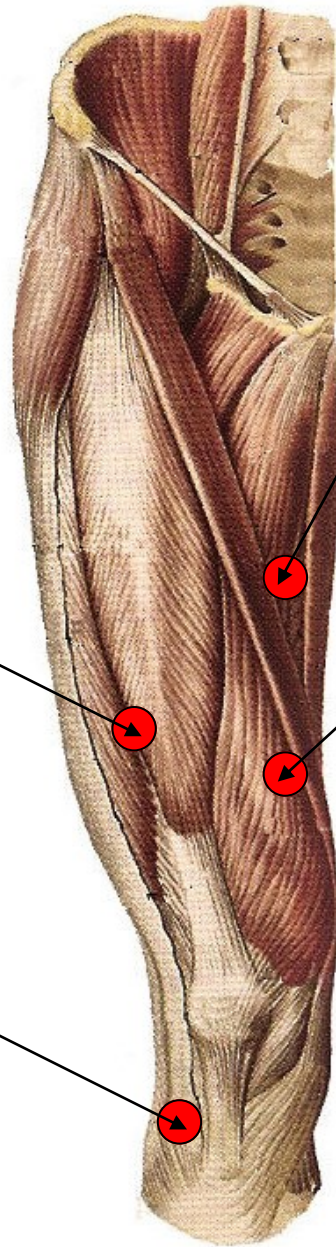
On the anterior border of the fibula. Also a stimulation point.

Sp 11 Jimen

On the anterior border of the satorius muscle. Attack as Sp 10 in an upwards direction or straight in.

Sp 10 Xuehai

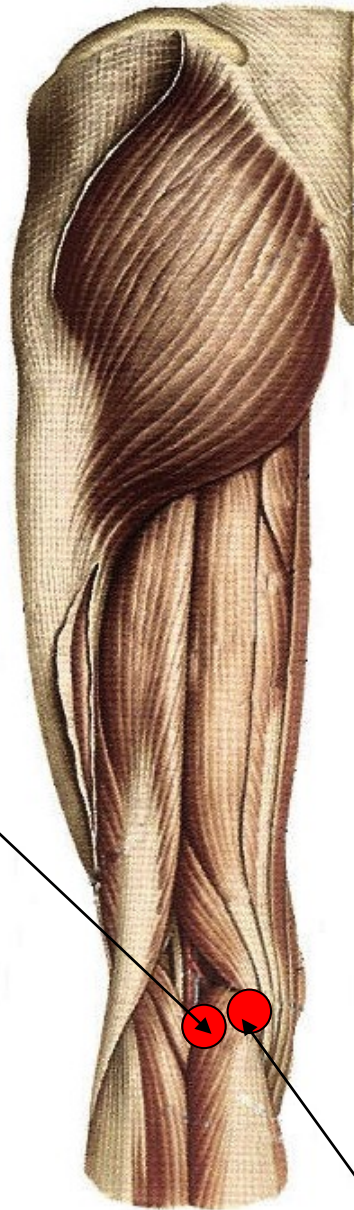
Just above the inside of the knee, on the anterior surface of the thigh, on the vastus medialis muscle. Attack with ball of foot, toes edge of foot etc. Strike inwards at 45% either upwards or downwards.



STANDARD POINTS OF ACUPUNCTURE FOR KYUSHO APPLICATIONS

Ki 10 Yingu

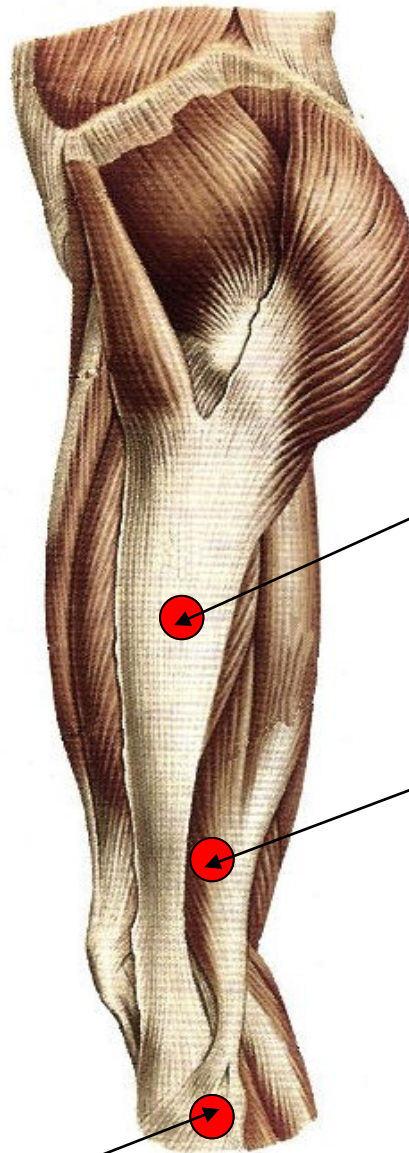
In the hollow of the knee between the tendons of the semimembranosus and semitendinosus. Attack with ball of foot, heel or side of foot.



B 54

Between the lateral and medial heads of the gastrocnemius. Attack with kick to apply pressure by gripping.

STANDARD POINTS OF ACUPUNCTURE FOR KYUSHO APPLICATIONS



Gb 31 Fengshi

On the thigh between the vastus lateralis and the biceps femoris. Important knockdown paralysis motor function point. Attack with knee, foot, fist etc. Associated with the femoral nerve and the lateral cutaneous nerve.

Gb 33

In the depression superior to the lateral epicondyle of the femur, in front of the tendon of m. Biceps femoris.

Gb 34 Yanglingquan

In the depression anterior and inferior to the small head of the fibula. Also a toning and stimulation point.

STANDARD POINTS OF ACUPUNCTURE FOR KYUSHO APPLICATIONS

Gb 34 Yanglingquan

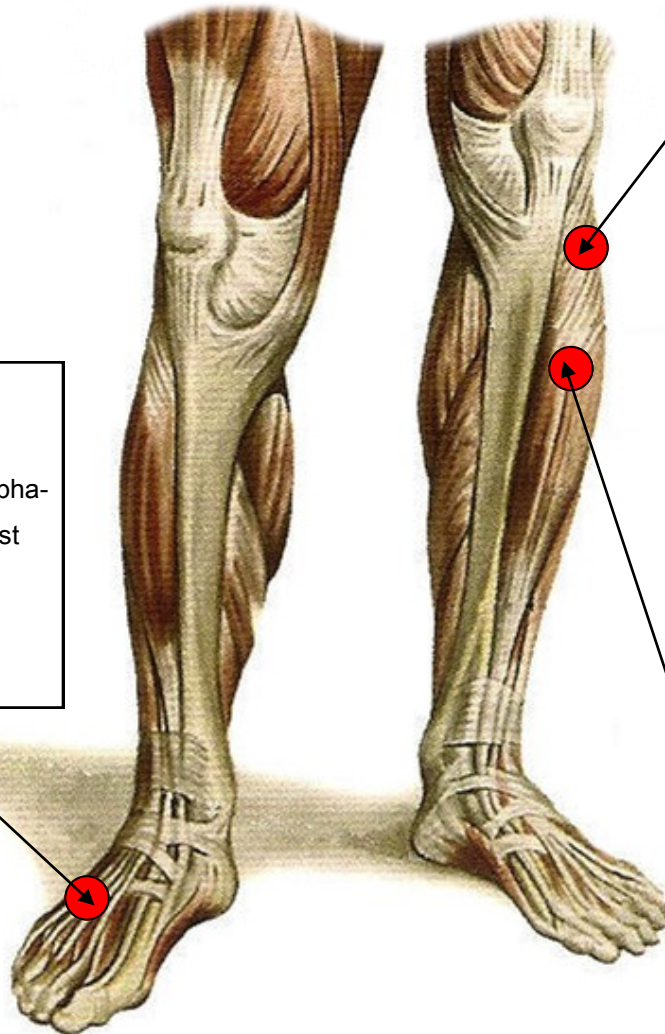
In the depression anterior and inferior to the small head of the fibula. Also a toning and stimulation point.

Liv 3 Taichong

Posterior to the metatarsophalangeal joint, between the 1st and 2nd metatarsal bone.

St 36 Zusanli

4 fingers below the knee. Associated with the lateral sural cutaneous branch of the saphenous and peroneal nerves. Attack with shin, foot edge, heel etc.



STANDARD POINTS OF ACUPUNCTURE FOR KYUSHO APPLICATIONS

B 57 Chengshan

Between the lateral and medial heads of the gastrocnemius. Where the two heads separate, like in a hill. Attack with kick or apply pressure by gripping.

B 54

Between the lateral and medial heads of the gastrocnemius. Attack with kick to apply pressure by gripping.

Ki 10 Yingu

In the hollow of the knee between the tendons of the semimembranosus and semitendinosus. Attack with ball of foot, heel or side of foot.

Gb 41 Lingqi

Posterior to the tendon of m. Extensor digiti minimi pedis, in front of the junction of the 4th and 5th metatarsal bones.

Ki 3 Taixi

Midway between the tip of the medial malleolus and tendo calcaneus.

